

Rendsburg Port

The new heavy-duty port at the Kiel-Canal in Northern Germany

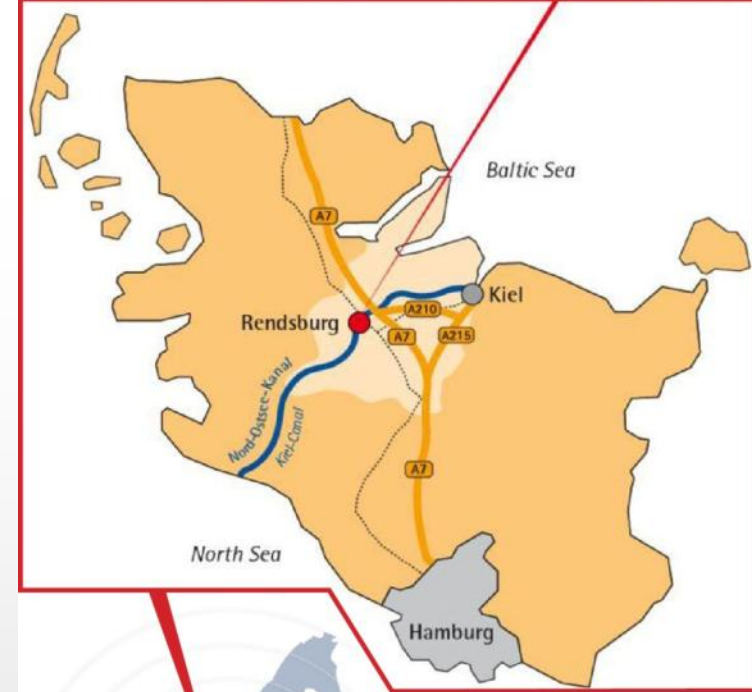


REDSBURG PORT

Rendsburg Port

The heavy-duty port at the
Kiel-Canal (Northern Germany)

- Located directly at the **Kiel-Canal**, in the middle of Schleswig-Holstein in **Northern Germany**
- Connected to all important transportation routes: interstate A7 to **Scandinavia** and **Hamburg** and the Kiel-Canal to the **North Sea**, **River Elbe** and **Baltic Sea**



Lage in Europa

Rendsburg Port

The heavy-duty port at the Kiel-Canal (Northern Germany)



RENSBURG PORT

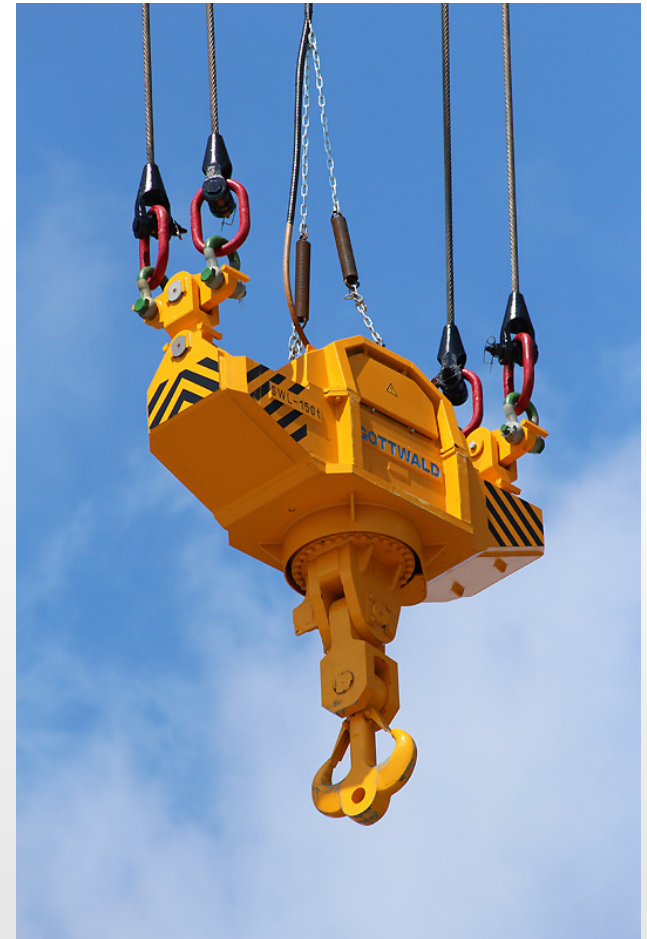
Rendsburg Port GmbH is operator of the heavy-duty port Rendsburg Port. Rendsburg Port GmbH is represented by Brunsbüttel Ports GmbH as sole shareholder since 7th March 2016.

Rendsburg Port is part of „SCHRAMM Ports & Logistics“.



SCHRAMM
Ports & Logistics

www.rensburg-port.de



Rendsburg Port

The heavy-duty port at the Kiel-Canal (Northern Germany)



The port is equipped with:

2 Mobile Harbour Cranes

- 150 tons
- 100 tons
- 250 tons
(in tandem operation)

Rendsburg Port

The heavy-duty port at the Kiel-Canal (Northern Germany)



The port is equipped with:

- Reachstacker
(45 tons lifting capacity for Container handling and project cargo)
- Forklift (16 tons)
- Tug Master
- Rolltrailer
up to 90 tons capacity

Rendsburg Port

The heavy-duty port at the Kiel-Canal (Northern Germany)



- Quay length:
300 meters
- Terminal area:
22,000 m²
- Pre-storage area:
15,000 m²
- Hall, floor space:
30 x 15 m
- Load-bearing capacity:
90 tons/m²

Rendsburg Port

The heavy-duty port at the Kiel-Canal (Northern Germany)



- Max. draught: 9.50 m
- Canal kilometer: 63



Rendsburg Port

The heavy-duty port at the Kiel-Canal (Northern Germany)



Our Services:

- Administration
- Organization /
Cargo Handling
- Storage
- Additional services

Rendsburg Port

The heavy-duty port at the Kiel-Canal (Northern Germany)

The industrial park



The heavy-duty port

The industrial park:
800,000 m²

Port and industrial park are connected by a **heavy-duty road** and directly connected to the **A 7** via the **A 210**.

→ located at the **main transport axis** between **Scandinavia** and **Southern Europe**.

Rendsburg Port

The heavy-duty port at the Kiel-Canal (Northern Germany)



Find out about the potentials **Rendsburg Port** offers **for your company**.

Please feel free to contact us for more information:

Rendsburg Port GmbH **Port operator**

Frank Schnabel

- Managing Director -

Phone: +49 (0) 4852 884-35

Mobile: +49 (0) 151 145 333 43

f.schnabel@rendsburg-port.de



Sven Hargens

- Managing Director -

Phone: +49 (0) 4852 884-44

Mobile: +49 (0) 170 798 75 66

s.hargens@rendsburg-port.de



Malte Krieger

- Sales & Marketing -

Phone: +49 (0) 4852 884-928

Mobile: +49 (0) 160 904 981 78

m.krieger@rendsburg-port.de



www.rendsburg-port.de

info@rendsburg-port.de